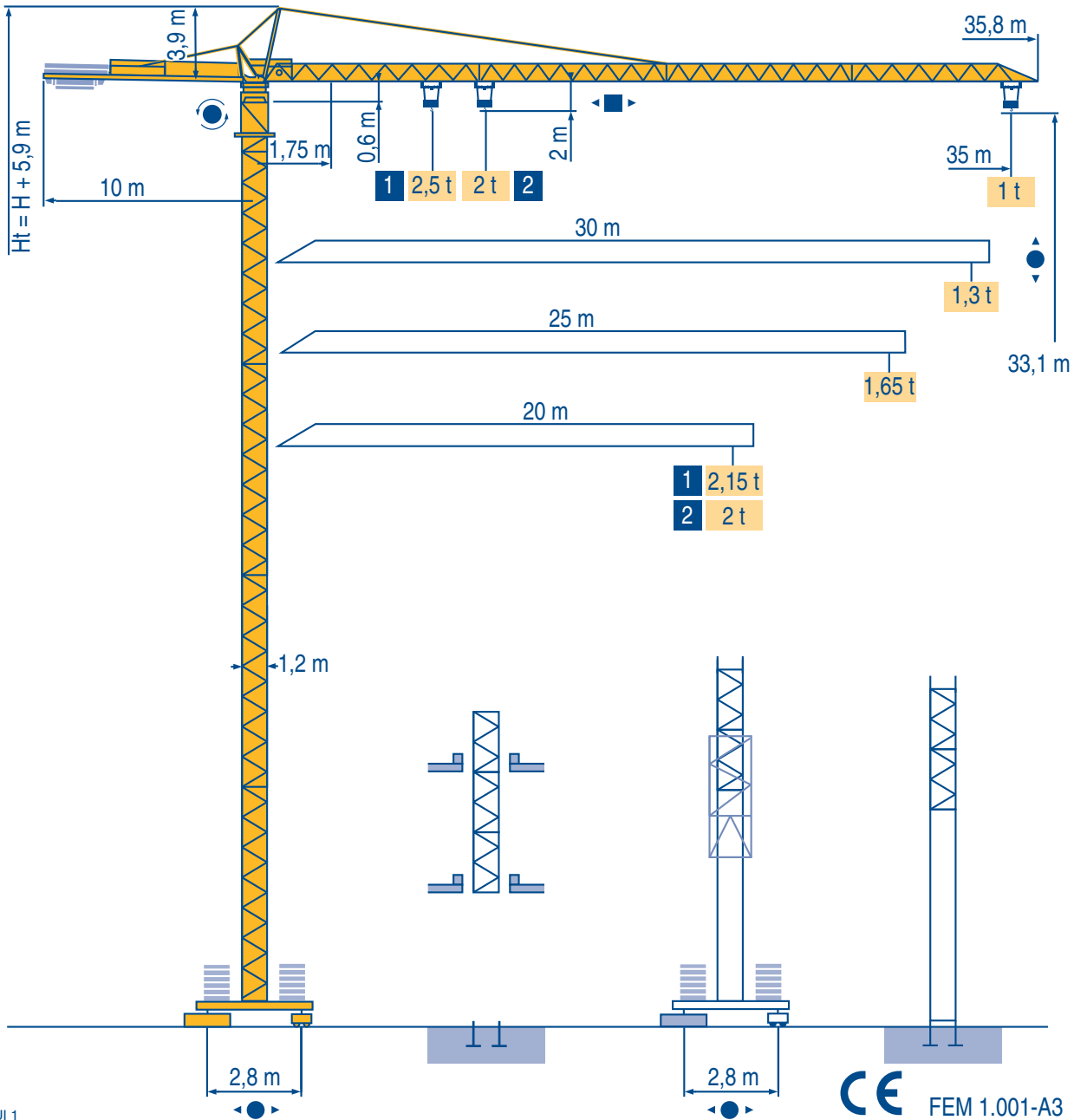


# CITY CRANE MC 48 B



Igo  
HD  
HDM



HDT



GTMR



CITY CRANE



TOPKIT MD  
MAXI MD



MAXI TOPKIT

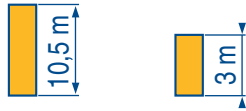


Topless MDT



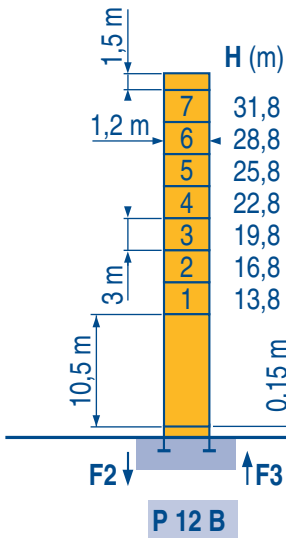
MR



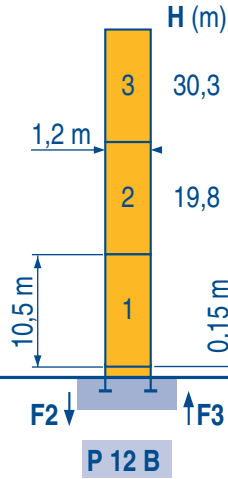


Ø 1,2 m

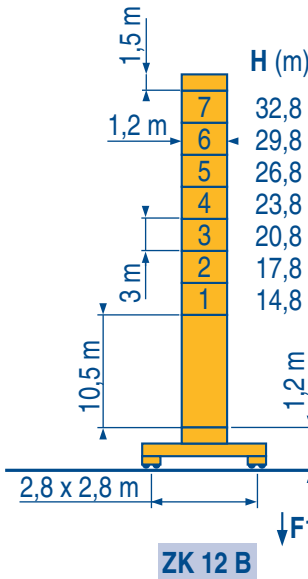
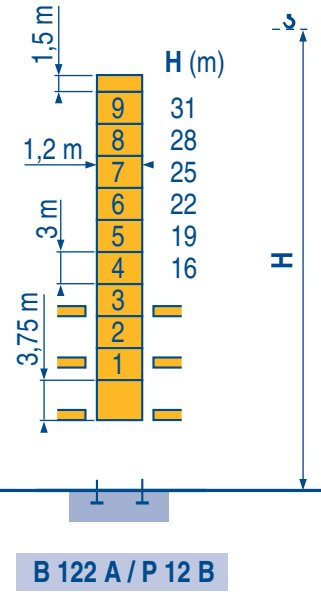
20 m → 35 m



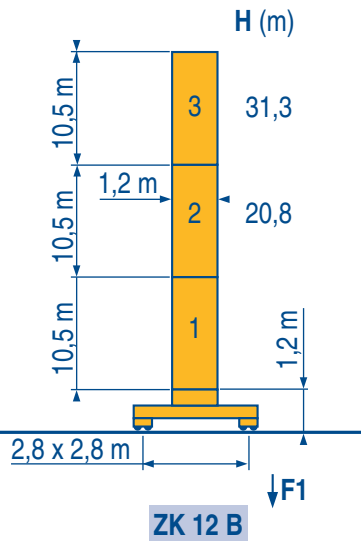
F2	● 41 t	■ 66 t
F3	● 30 t	■ 57 t
👤	14 t	



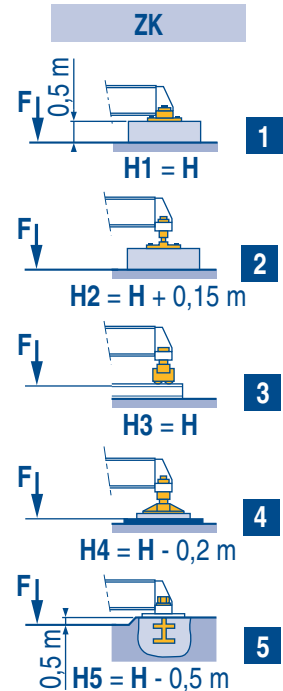
F2	● 37 t	■ 55 t
F3	● 28 t	■ 47 t
👤	11 t	



F1	● 37 t	■ 54 t
👤	17 t	



F1	● 34 t	■ 45 t
👤	14 t	



LUI 2



Voir télescopage sur dalles



Réactions en service

Réactions hors service



A vide sans lest (ni train de transport) avec flèche et hauteur maximum.

Siehe Kletterkrane im Gebäude



Reaktionskräfte in Betrieb

Reaktionskräfte außer Betrieb

Ohne Last, Ballast (und Transportachse), mit Maximalausleger und Maximalhöhe.

See climbing crane



Reactions in service

Reactions out of service

Without load, ballast (or transport axles), with maximum jib and maximum height.

Veja grua trepadora



Reacciones en servicio

Reacciones fuera de servicio

Sin carga, sin lastre, (ni tren de transporte), flecha y altura máxima.

Consultare gru in cavedio



Reazioni in servizio

Reazioni fuori servizio

A vuoto, senza zavorra (ne assali di trasporto) con braccio massimo e altezza massima.

Ver telescopagem sobre lages



Reações em serviço

Reações fora de serviço

Sem carga (nem trem de transporte)-sem lastro com lança e altura máximas.

Courbes de charges  
Lastkurven



Load diagrams  
Curvas de cargas



Curve di carico  
Curva de cargas



Height (m)	1,75	16,4	19,8	20	22	25	27	30	32	35	Unit
35 m	2,5	-	1,98	1,77	1,52	1,38	1,22	1,12	1	t	
	2	-	1,77	1,52	1,38	1,22	1,12	1	t		
30 m	2,5	2,1	-	1,89	1,62	1,48	1,3	t			
	2	1,89	1,62	1,48	1,3	t					
25 m	2,5	2,15	-	1,92	1,65	t					
	2	1,92	1,65	t							
20 m	2,5	2,15	t								
	2	t									

LUI 1

Télescopage sur dalles  
Kletterkrane im Gebäude



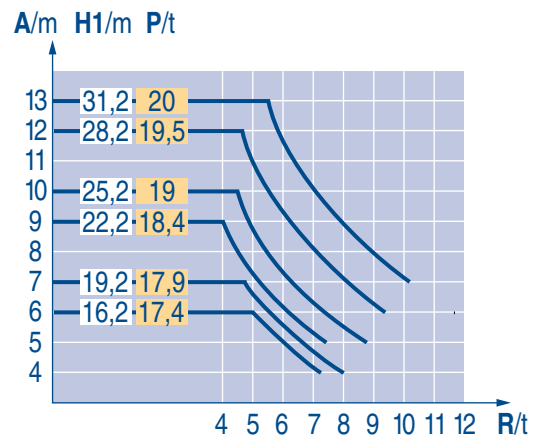
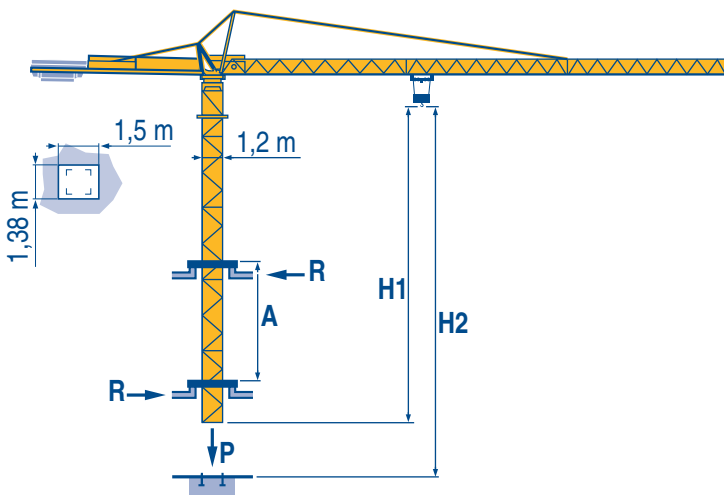
Climbing crane  
Telescopage gruas trepadoras



Gru in cavedio  
Telescopagem sobre lages



B 122 A



LUI 1

A	Distance entre cadres	Abstand zwischen den Rahmen	Distance between collars	Distancia entre marcos	Distanza fra i telai	Distância entre quadros
H1	Hauteur grue	Kranhöhe	Crane height	Altura grúa	Altezza gru	Altura da grua
P	Poids de la grue (en service)	Krangewicht (in Betrieb)	Crane weight (in service)	Peso de la grúa (en servicio)	Peso della gru (in servizio)	Peso da grua (em serviço)
R	Réaction horizontale	Horizontalkräfte	Horizontal reaction	Reaccion horizontal	Reazione orizzontale	Reacção horizontal

						ch - PS hp	kW	
	9 RPC 10-3	m/min	6,6	20	40	8,2	6	115 m
		t	2	2	1			
	15 PC 10-2	m/min	8,3	25	50	15	11	178 m
		t	2	2	1			
	15 PC 13-5	m/min	7,1	21	42	15	11	130 m
		t	2,5	2,5	1,3			
	1 D2 V1	m/min	18 - 36			1,2	0,9	
	RCV 40	tr/min U/min rpm	0 → 0,8			6	4,5	
	TVD 324	m/min	26			2 x 4	2 x 2,9	

CEI 38	IEC 38	kVA	
400 V (+6% -10%) 50 Hz		9 PC : 15 kVA 15 PC : 20 kVA	84/534 - 87/405

LUI 3

	Levage	F	Heben	D	Hoisting	GB	Elevación	E	Sollevamento	I	Elevação	P
	Distribution		Katzfahren		Trolleying		Distribución		Distribuzione		Distribuição	
	Orientation		Schwenken		Slewing		Orientación		Rotazione		Rotação	
	Translation		Kranfahren		Travelling		Traslación		Traslazione		Translação	
	Conforme aux directives CEE 84/534 et 87/405 sur le niveau acoustique		Gemäss EWG-Richtlinien 84/534 und 87/405 für den Schall-Leistungspegel		In compliance with the EEC 84/534 and 87/405 Instructions on noise level		Conforme con las directivas CEE 84/534 y 87/405 sobre el nivel acústico		Conforme alle direttive CEE 84/534 e 87/405 sul livello acustico		Conforme as directivas CEE 84/534 e 87/405 sobre o nível acústico	

Document commercial non contractuel. Pour toute information technique se référer à la notice correspondante

Unverbindliches Vertriebsdokument. Für technische Informationen, siehe die entsprechenden Anweisungen.

This commercial document is not legally binding. For any technical information, please refer to the corresponding instructions.

Documento comercial non contractuel. Para cualquier información técnica, ver la noticia correspondiente.

Documento commerciale non vincolante, per tutte le informazioni tecniche fare riferimento al catalogo istruzioni

Documento comercial não contratual. Para qualquer informação técnica complementar consultar as respectivas instruções

**BISCHAG**

Bau- und Industriekräne  
Verkauf-Vermietung-Service  
Hebebühnen  
Scheren-Bühnen  
Teleskop-Arbeitsbühnen  
Verkauf-Vermietung  
Transporte  
Spezialtransporte  
Greiferarbeiten  
Seilwindarbeiten  
LKW mit Ladekran

Grienstrasse 17  
4227 Büsserach  
Telefon 061 781 55 11  
Fax 061 781 55 12  
www.bischag.ch

**POTAIN**

18.Rue de Charbonnières, B.P. 173  
F-69132 ECULLY Cedex  
Tél. (33)04.72.18.20.20  
Fax (33)04.72.18.20.00  
http://www.potain.com  
E-mail : mkt@potain.fr

**Manitowoc**  
Manitowoc Crane Group

**Deutschland**  
POTAIN GmbH  
Tel : 06.1.05.70.40

**Italia**  
POTAIN S.p.A.  
Tel : 0.331.49.33.11

**Portugal**  
POTAIN Portugal  
Tel : 22.968.08.89

**Singapore**  
MANITOWOC POTAIN PTE LTD  
Tel : 227.15.50

Copyright.Reproduction interdite © POTAIN 2000

**CITY CRANE MC 48 B**  
Réf. 2000.36 LUI 5